

# PERFORMANCE OF RICE CROP AS INFLUENCED BY VARIOUS PLANTING METHODS, VARIETIES AND DATES OF TRANSPLANTING

AMANDEEP KAUR, L. K. DHALIWAL AND G. S. BUTTAR\*

School of Climate Change and Agricultural Meteorology

Directorate of Extension Education, Punjab Agricultural University, Ludhiana, Punjab- 141 004. INDIA.

e-mail: aman\_s86@yahoo.com

## INTRODUCTION

Rice is the main cereal crop of north-western India including Punjab. In Punjab, rice cultivation has increased considerably with the availability of high yielding varieties, irrigation facilities and support price. Rice currently occupies an area of 28.45 lakh hectare with production of 113.74 lakh tons and productivity of 39.98 q ha<sup>-1</sup> in Punjab (Anonymous, 2014). On an average, more than 4000 litres of the water is consumed to produce one kilogram of rice (Anonymous, 1992). To meet the demands of ever increasing population and maintenance of self sufficiency, the present production level needs to be increased up to 120 million tonnes by the year 2020 (Sujathamma *et al.*, 2015). The production can be increased vertically without expansion of area under rice. Punjab is currently facing the problems of declining ground water table in most of its areas, increased energy cost for pumping of underground water and deterioration of ground water quality. Transplanting in puddled field is the common method which results in formation of a hard pan and deteriorates the soil structure. The traditional practice of continuous ponding of water also results in considerable deep percolation losses and over irrigation than the crop requirements. Hence, other practices for rice growing need to be explored to solve this problem such as transplanting in beds without puddling the soil which requires less water. In this method, the seedlings are transplanted in between the beds and water is applied only in between the beds, which results in 30-35 per cent saving of water. Bed planting has shown improved water use efficiency and fertilizer use efficiency, reduced crop lodging and reduced seed rate without sacrificing yield (Hobbs *et al.*, 2000). Transplanting rice on sides of freshly constructed beds saves 15% irrigation water as compared to puddle flat (Sandhu *et al.*, 2012). Optimum plant spacing ensures plants to grow properly both in their above and underground parts through different utilization of solar radiation and nutrients (Singh *et al.*, 2015). So, there is an urgent need to improve the water productivity of rice crop in Punjab to prevent economic loss and ecological degradation. Keeping this in view, the field experiments were conducted to study the effect of planting methods on yield and yield contributing characteristics of rice.

## MATERIALS AND METHODS

Field experiments were conducted during *kharif* season of 2012 and 2013 at the Research Farm, School of Climate Change and Agricultural Meteorology, Punjab Agricultural University, Ludhiana. It is situated at 30°54'N latitude and 75°48'E longitude and is 247 m above mean sea level. The area experiences an average annual rainfall of 759.3 mm. Two rice varieties, PR-118 (V<sub>1</sub>) and PR-116 (V<sub>2</sub>) were transplanted under bed planting method (M<sub>1</sub>) and conventional (Flat) method

## ABSTRACT

Field experiments were conducted at Punjab Agricultural University, Ludhiana (Punjab) to study the effect of planting methods on yield and yield contributing characteristics of rice crop during *kharif* 2012 and 2013. The experiments comprise of three dates of transplanting (15<sup>th</sup> June, 30<sup>th</sup> June and 15<sup>th</sup> July), two rice varieties (PR-118 and PR-116) and two planting methods (bed and conventional). The experiment was laid out in the factorial split plot design. Seedlings were transplanted at a spacing of 20 cm x 15 cm in conventional method and 30 cm x 10 cm on the middle of beds. The results showed that significant reduction in grain yield was observed with delay in transplanting from 15<sup>th</sup> June onwards. Significantly higher grain yield (43.77q/h) was recorded in variety PR-118 as compared to variety PR-116 (33.19q/h). The yield contributing characteristics were also significantly higher in 15<sup>th</sup> June transplanted crop (variety PR-118), under bed planting as compared to conventional planting. The crop transplanted in beds gave significantly higher grain yield (43.7q/ha) as compared to conventional (flat) planting (33.3q/ha).

## KEY WORDS

Bed planting  
conventional planting  
microclimate  
water saving,

Received : 08.10.2015

Revised : 14.12.2015

Accepted : 13.02.2016

\*Corresponding author

(M<sub>2</sub>) on three different dates viz. 15<sup>th</sup> June (D<sub>1</sub>), 30<sup>th</sup> June (D<sub>2</sub>) and 15<sup>th</sup> July (D<sub>3</sub>) during both the crop seasons. Fresh beds were prepared with the help of wheat bed planter. The 30 days old seedlings were transplanted at a spacing of 20 cm x 15 cm in conventional method and 30 cm x 10 cm on the middle of the beds. The experiment was laid out in the factorial split plot design with four replications. The recommended doses of fertilizers were applied at the rate of 110 kg N/acre in the form of Urea, 27 kg P<sub>2</sub>O<sub>5</sub>/acre in the form of DAP and 20 kg K<sub>2</sub>O in the form of MOP as per the recommendations by Punjab Agricultural University, Ludhiana. Yield contributing characteristics viz. number of grains per plant, number of effective tillers per plant, 1000-grain weight, grain yield and straw yield were recorded at harvesting. The meteorological data was recorded at the Agro meteorological Observatory located 100m away from the experimental site.

## RESULTS AND DISCUSSION

### Weather during 2012 and 2013 crop seasons

The maximum temperature during crop season was ranged between 28.7- 43.7°C in 2012 and 24.7 - 44.1°C in 2013 crop season. The minimum temperature was ranged between 17.6- 29.2°C in 2012 and 11.9 – 29.1°C in 2013 crop season (Figure 1). The minimum temperature during 2013 was higher from 39<sup>th</sup> to 43<sup>rd</sup> SMW as compared to 2012. The sunshine hours were in the range of 3.3- 11.1 hrs in 2012 and 2.1- 10.0

hrs in 2013 crop season (Figure 2). From 38<sup>th</sup> to 43<sup>rd</sup> SMW, the sunshine hours were higher during 2012 compared to 2013. Total rainfall received during 2012 crop season was 422.0 mm as compared to 723.1mm in 2013 (Figure 2). During 2012 the rainfall was very low and it was drought year.

### Biometric parameters

Growth and yield contributing characteristics viz. plant height and dry matter per plant were significantly higher in 15<sup>th</sup> June transplanted crop as compared to 30<sup>th</sup> June and 15<sup>th</sup> July transplanted crop (Table 1) during both the crop seasons. Significantly higher plant height was recorded in bed planting method (82.5 cm) as compared to conventional method (75.6 cm). Bhuyana *et al.* (2012) also observed that plant height of rice was higher in bed planted crop as compared to conventional planting. Better growth of rice in bed planting method might be due to higher availability of photosynthetically active radiation (PAR) and amount of light available for photosynthesis which ultimately improved the development through proper carbohydrates metabolism and respiration resulting better growth of rice. Crop transplanted on 15<sup>th</sup> June recorded the highest dry matter per plant (44.6 gm) as compared to 30<sup>th</sup> June (38.7 gm) and 15<sup>th</sup> July (31.1 gm) transplanted crop. Dhaliwal *et al.* (2011) also observed that 10<sup>th</sup> June transplanted crop produced higher dry matter as compared to early and late transplanted crop. Significant interaction effect of different dates of transplanting and varieties was observed for dry matter per plant during both the years

**Table 1: Effect of different treatments on growth and yield attributes of rice (Pooled data of 2 years)**

Treatments/Transplanting Dates	Plant ht. at harvest(cm)	No. of effective tillers/pl.	1000 grain wt. (gm)	No. of grains/pl.	Biological mass (q/ha)	Yield (q/ha)	Harvest index (%)
15th June(D <sub>1</sub> )	83.0	18.5	22.4	404.2	100.1	43.6	47.2
30th June(D <sub>2</sub> )	79.4	14.2	20.6	381.8	88.8	40.6	42.2
15th July (D <sub>3</sub> )	75.0	10.4	19.2	308.4	81.8	31.1	41.2
CD (P=0.05)	1.9	1.6	0.68	28.2	9.1	2.8	3.1
<b>Varieties</b>							
PR-118 (V <sub>1</sub> )	81.4	17.4	22.8	380.3	98.3	43.8	37.9
PR-116 (V <sub>2</sub> )	76.8	11.4	18.8	349.2	82.3	33.2	32.2
CD (P=0.05)	1.6	1.3	0.5	23.0	0.74	2.3	2.6
<b>Transplanting Methods</b>							
Bed Planting (M <sub>1</sub> )	82.5	16.8	22.4	411.6	95.7	43.7	38.5
Conventional Planting (M <sub>2</sub> )	75.8	12.0	19.1	317.9	84.9	33.3	31.7
CD (P=0.05)	2.3	0.89	0.6	18.3	7.04	3.5	2.3

**Table 2: Interactive effect of different dates of sowing and varieties on dry weight per plant (gm) at harvest**

	2012				2013				Pooled			
	D <sub>1</sub>	D <sub>2</sub>	D <sub>3</sub>	Mean	D <sub>1</sub>	D <sub>2</sub>	D <sub>3</sub>	Mean	D <sub>1</sub>	D <sub>2</sub>	D <sub>3</sub>	Mean
V <sub>1</sub>	58.3	48.1	39.6	48.7	46.8	37.0	30.4	38.1	52.6	42.6	35.0	43.4
V <sub>2</sub>	42.3	41.4	30.9	38.2	31.7	30.5	23.3	28.5	36.5	34.7	27.1	32.8
Mean	50.3	44.8	35.3	39.2	33.9	26.9	-	44.6	38.7	31.1	-	4.1
CD				4.5				3.2				

**Table 3: Interactive effect of different planting methods and varieties on dry weight per plant (gm) at harvest**

	2012			2013			Pooled		
	M <sub>1</sub>	M <sub>2</sub>	Mean	M <sub>1</sub>	M <sub>2</sub>	Mean	M <sub>1</sub>	M <sub>2</sub>	Mean
V <sub>1</sub>	56.9	40.5	48.7	45.4	30.8	38.1	51.2	35.6	43.4
V <sub>2</sub>	40.1	36.3	38.2	30.9	26.0	28.5	34.9	30.6	32.8
Mean	48.5	38.4	-	38.2	28.4	-	43.1	33.1	-
CD			3.5			2.8			2.5

**Table 4: Interactive effect of different dates of sowing and varieties on effective tillers/plant of rice**

	2012				2013				Pooled			
	D <sub>1</sub>	D <sub>2</sub>	D <sub>3</sub>	Mean	D <sub>1</sub>	D <sub>2</sub>	D <sub>3</sub>	Mean	D <sub>1</sub>	D <sub>2</sub>	D <sub>3</sub>	Mean
V <sub>1</sub>	24.5	19.0	12.3	18.6	21.5	15.0	11.8	16.1	23.0	17.0	12.1	17.4
V <sub>2</sub>	14.6	12.9	8.9	12.1	13.5	9.8	8.8	10.7	14.1	11.8	8.8	11.6
Mean	19.6	15.9	10.6	-	17.5	12.4	10.3	-	18.6	14.4	10.4	-
CD				3.1				1.8				2.2

**Table 5: Interactive effect of different planting methods and varieties on effective tillers/plant of rice**

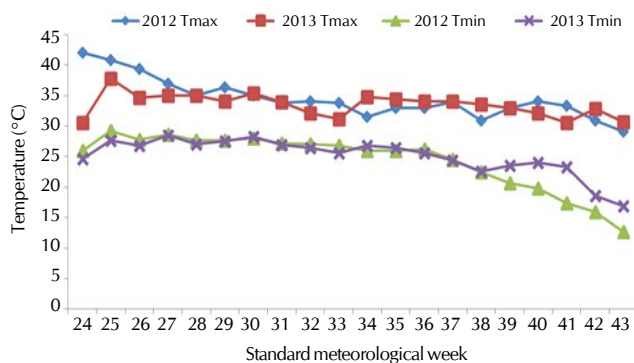
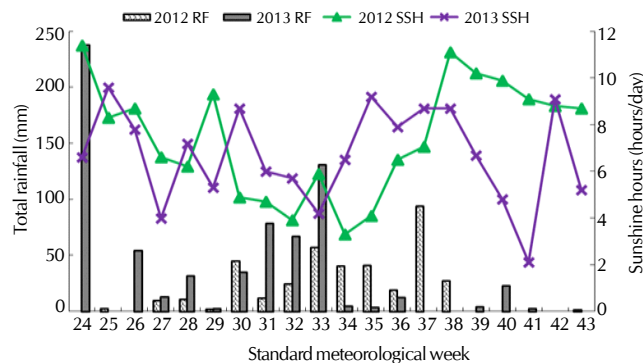
	2012			2013			Pooled		
	M <sub>1</sub>	M <sub>2</sub>	Mean	M <sub>1</sub>	M <sub>2</sub>	Mean	M <sub>1</sub>	M <sub>2</sub>	Mean
V <sub>1</sub>	22.0	15.2	18.6	19.3	12.9	16.1	20.6	13.3	16.9
V <sub>2</sub>	13.8	10.5	12.1	12.2	9.4	10.8	14.1	9.9	12.0
Mean	17.9	12.8	-	15.7	11.2	-	17.4	11.6	-
CD			1.4			1.3			1.2

**Table 6: Interactive effect of dates of transplanting and varieties on grain yield (q/ha) of rice**

	2012				2013				Pooled			
	D <sub>1</sub>	D <sub>2</sub>	D <sub>3</sub>	Mean	D <sub>1</sub>	D <sub>2</sub>	D <sub>3</sub>	Mean	D <sub>1</sub>	D <sub>2</sub>	D <sub>3</sub>	Mean
V <sub>1</sub>	58.3	46.0	38.4	47.6	52.7	39.4	30.9	41.0	53.0	43.6	34.6	43.7
V <sub>2</sub>	41.9	36.7	32.1	36.9	33.4	31.4	23.0	29.4	37.7	34.4	27.5	33.2
Mean	47.5	44.0	35.2	-	43.1	35.6	26.9	-	43.6	40.6	31.1	-
CD				4.0				6.8				3.9

**Table 7: Interactive effect of different planting methods and varieties on grain yield (q/ha) of rice**

	2012			2013			Pooled		
	M <sub>1</sub>	M <sub>2</sub>	Mean	M <sub>1</sub>	M <sub>2</sub>	Mean	M <sub>1</sub>	M <sub>2</sub>	Mean
V1	56.2	41.4	48.8	49.0	31.5	40.3	51.5	35.9	43.7
V2	39.0	32.5	35.8	33.1	27.3	30.2	36.0	30.5	33.3
Mean	47.6	37.0	-	41.0	29.4	-	43.8	33.2	-
CD			4.9			8.1			4.9

**Figure 1: Meteorological parameters maximum and minimum temperature (°C), during 2012 and 2013****Figure 2: Meteorological parameters total rainfall (mm) and sunshine hours (hrs) during 2012 and 2013**

(Table 2). Variety PR-118 transplanted on 15<sup>th</sup> June recorded significantly higher dry matter per plant (52.6 gm) as compared to all other combinations. Similarly significant interaction was also observed between different planting methods and varieties (Table 3). Bed planting method produced significantly higher dry matter per plant (51.2 gm) in variety PR-118 as compared to all other combinations. Crop transplanted on 15<sup>th</sup> June produced maximum biological yield (10.0 t/ha) followed by 30<sup>th</sup> June (8.9 t/ha) and 15<sup>th</sup> July (8.2 t/ha) transplanting respectively. The highest biological yield (9.57 t/ha) was recorded in bed planting method as compared to conventional

method (8.49 t/ha) (Table 1). These results corroborate to the findings of Dhaliwal *et al.* (2006). Patel (1999) also reported significantly higher biomass in early transplanted crop (15<sup>th</sup> June) as compared to delayed transplanting (30<sup>th</sup> June and 30<sup>th</sup> July).

#### Effective tillers

The time of transplanting influenced the number of effective tillers per plant (at harvest) in both the varieties and significant differences were observed in varieties under different dates of transplanting during both the crop seasons (Table 1). The crop transplanted on 15<sup>th</sup> June produced significantly higher

number of effective tillers per plant (18.5) as compared to 30<sup>th</sup> June (14.2) and 15<sup>th</sup> July (10.4) transplanted crop. Similar results were also reported by Om *et al.* (1997). Gill *et al.* (2006) also observed that maximum productive tillers were obtained when transplanting was done on 10<sup>th</sup> June. The low temperature prevailed at the pollen development stage of late transplanted crop may cause a sharp decline in fertile or filled spikelets particularly in the photosensitive cultivars. The variety PR-118 produced significantly higher number of effective tillers per plant (17.3) as compared to variety PR-116 (11.4) during both the crop seasons.

In pooled analysis, bed planting method produced more number of effective tillers (16.8) as compared to conventional planting (12.0) (Table 1). It might be due to the reason that each individual tiller has uniform supply of nutrients, more light and aeration and also the advantage of less severe competition amongst germinated seeds/seedlings, which resulted in more number of panicle-bearing tillers per unit area in bed planting method. The results were in conformity with Gupta *et al.* (2002). Gupta and Hobbs (2002) also observed that when rice crop was transplanted on the raised beds the crop gets escaped from losses due to temporary water logging. The interaction between different dates of transplanting and different varieties showed significantly higher number of effective tillers per plant (23.0) with the combination of 15<sup>th</sup> June transplanting in variety PR-118 (Table 4). Significant interactions were also observed between different planting methods and different varieties

### Grain yield

Grain yield is a function of growth and yield attributing parameters. The highest grain yield was obtained in 15<sup>th</sup> June transplanted crop (43.7 q/ha) followed by 30<sup>th</sup> June (40.7 q/ha) and 15<sup>th</sup> July (31.1 q/ha) transplanting during both the crop seasons. The perusal of data indicated that with each delay in transplanting of rice, there was significant reduction in grain yield during both the crop seasons. Dhaliwal *et al.* (2006) and Mahajan *et al.* (2009) also reported that crop transplanted on 10<sup>th</sup> June gave higher yield. Bali *et al.* (1995) observed that June was the optimum planting time for obtaining higher yield of rice in northwest India. Similarly Oteng *et al.* (2013) also reported that transplanting date can have a dramatic effect on crop development and yield of rice crop. The variety PR-118 recorded significantly higher grain yield (43.8 q/ha) as compared to variety PR-116 (33.2 q/ha) during both the crop seasons.

Grain yield was significantly higher (43.7 q/ha) in bed planting as compared to conventional planting method (33.3 q/ha) during both the crop seasons. The higher grain yield recorded in bed planting method was attributed to good crop conditions, efficient utilization of natural resources (soil, light, water, air *etc.*) which resulted in higher number of tillers per plant, number of effective tillers and number of grains per plant than conventional method. Grain yield of rice transplanted on bed was as higher compared with the recommended flat planting method reported as Atta *et al.* (2006), Khetak *et al.* (2006), Mishra and Saha (2007) and Kaur *et al.* (2007). Similar results were also reported by Singh (2003), Singh *et al.* (2002), Bhuyan *et al.* (2012), Singh *et al.* (2008) and Thawait *et al.* (2014). Pandey *et al.* (2012) revealed that yield of rice transplanted on FIRB (bed irrigated raised beds) is comparable with traditional

rice cultivation with as much as 25 per cent to 50 per cent saving in irrigation water. Significant interactions were found on the effect of yield between dates of transplanting and varieties. Similarly interactions were also found between different varieties and planting methods (Tables 6 and 7). Interaction between different dates of transplanting and different varieties showed that significantly higher yield (53.0 q/ha) was recorded with the combination of 15<sup>th</sup> June transplanting (D<sub>1</sub>) in variety PR-118 in comparison to all other combinations. The interaction between different planting methods and varieties showed significantly higher yield in variety PR-118 (51.5 q/ha) under bed planting method as compared to all other combinations of dates and varieties.

The yield contributing characteristics *viz.* 1000-grain weight, number of grains per plant and harvest index differed significantly in all the treatments (Table 1). Among the different dates of transplanting, rice transplanted on 15<sup>th</sup> June (D<sub>1</sub>) had maximum 1000-grain weight (22.45 gm), number of grains per plant (404.16) and harvest index (47.20 %) as compared to 30<sup>th</sup> June and 15<sup>th</sup> July transplanting during both the crop seasons. This may be due to availability of favourable temperature during panicle and grain development period in 15<sup>th</sup> June (D<sub>1</sub>) transplanted crop. These findings were also supported by Soomro *et al.* (2001) and Sharma *et al.* (2011) who observed significant reduction in yield and yield contributing characteristics with delay in transplanting. Variety PR-118 had more 1000-grain weight (22.76 gm), number of grains per plant (380.33) and harvest index (43.8 %) during both the crop seasons. The planting method had a significant effect on yield contributing characteristics. The bed planting method had more 1000-grain weight (22.42 gm), number of grains per plant (411.63) and harvest index (38.48 %) as compared to conventional method (19.14 gm, 317.91 and 31.68 %) during both the crop seasons. The maximum number of grains in bed transplanted crop might be due to production of maximum number of tillers per unit area on account of higher availability of solar radiation.

In general the yield and yield contributing characteristics were comparatively lesser in 2013 crop season than 2012 because of high minimum and maximum temperature prevailed during the crop growing season. The high temperature might have affected initial growth of the crop, thereby resulting in reduced grain yield during 2013 crop season. Total rainfall during 2013 crop season was higher (695.7 mm) as compared to 2012 (381.8 mm). During booting stage 252.1 mm rainfall was received which resulted in lower yield due to washing of pollens.

### ACKNOWLEDGEMENT

The first author is highly thankful to Department of Science and Technology (DST), New Delhi for providing INSPIRE fellowship during Ph.D programme.

### REFERENCES

- Anonymous. 1992. IRRI programme report. pp.21-22.  
 Anonymous. 2014. Package of practices for the kharif crops of Punjab. pp. 1-18.

- Atta, Y. I. M., Meleha, M. E., Tallet, A., and Gawish, U. M. 2006.** Improving water productivity in rice cultivation with high potential for water saving. *The 3<sup>rd</sup> Arab World Region Conference held at Cairo from 4-11 December, 2006.*
- Bali, A. S., Singh, K., Amarjit, N., Bali, S., Gahai, B. A. and Hasan, B. 1995.** Effect of transplanting date, number and age of seedlings on rice. *Indian J. Agron.* **40**: 504-07.
- Bhuyan, M. H. M., Ferdousi, M. R. and Iqbal, M. T. 2012.** Yield and growth response to transplanted aman rice under raised bed over conventional cultivation method. *ISRN Agron.* pp. 1-8.
- Dhaliwal, L. K., Hundal, S. S., Chahal, S. K. and Aneja, A. 2006.** Effect of conventional and bed planting methods on radiation interception, growth and yield of rice paddy. In: *Proceedings of the international workshop on water saving practices in rice paddy cultivation held at Kulalumpur (Malaysia) from 14-15 September, 2006.*
- Dhaliwal, L. K., Hundal, S. S., Sandhu, S. K. and Aneja, A. 2011.** Growth response of paddy (*Oryza sativa*) to radiation interception and agroclimatic indices under different planting methods. *Inter. J. Agr. Sci.* **7(2)**: 392-95.
- Gupta, R. K. and Hobbs, P. R. 2002.** Resource conserving technologies: Transforming the rice-wheat system of Indo-Gangetics Plains. Rice-Wheat consortium - A success story. APAARI Publication. pp. 1-42.
- Gupta, R. K., Naresh, R. K., Hobbs, P. R. and Ladha, J. K. 2002.** Adopting conservation agriculture in rice-wheat system of the Indo-Gangetic Plains: New opportunities for saving water. In Bouman B. A. M., Hengsdijk H., Hardy B., Bindraban P. S., Tuong T. P. and Ladha J. K. (ed) *Water-Wise Rice Production*. pp. 207-22. IRRI, Los Banos.
- Gill, M. S., Kumar, A. and Kumar, P. 2006.** Growth and yield of rice (*Oryza sativa* L.) cultivars under various methods and times of sowing. *Ind. J. Agron.* **51**: 123-27.
- Hobbs, P. R., Singh, G. S. and Duxbury, J. M. 2000.** Direct seeding and reduced tillage options in the rice-wheat systems of the Indo-Gangetic Plains of South Asia. In: Paper Presented at IRRI Workshop. Bangkok, Thailand. pp. 25-28.
- Khattak, S. I., Usman, K., Khan, Q., and Qayyum, A. 2006.** Impact of various planting techniques on yield and yield components of rice. *Indus J. Pl. Sci.* **5(1)**: 753-56.
- Kaur, J., Mahey, R. K., Vashist, K. K., and Mahal, S. S. 2007.** Growth and productivity of rice (*Oryza sativa*) and water expense efficiency as influenced by different planting techniques. *Environ and Ecol.* **25**: 235-38.
- Mahajan, G., Bharaj, T. S. and Timsina, J. 2009.** Yield and water productivity of rice as affected by time of transplanting in Punjab, India. *Agr. Water Manag.* **96**: 525-32.
- Mishra, V. and Saha, R. 2007.** Effect of raised sunken bed system on inter-plot water harvesting and productivity of rice and french bean in Meghalaya. *Ind. J. Agril Sci.* **77**: 73-78.
- Om, H., Katyal, S. K. and Dhiman, S. D. 1997.** Performance of recently evolved rice hybrids under different dates of planting in north-western India. *Oryza.* **34**: 152-55.
- Oteng, D. P., Kyei, B. N. and Ofori, E. 2013.** Yield of rice as affected by transplanting dates and plant spacing under climate change simulations. *Wudpecker J. Agri. Res.* **2(12)**: 55 – 63.
- Pandey, V. P., Singh, B. and Tripathi, B. P. 2012.** Planting of crops with bed irrigated raised bed (FIRB) system and advantages of raised bed planting (RBP) in crop production. *Financing Agric.* **44**: 20-23.
- Patel, J. R. 1999.** Response of rice (*Oryza sativa*) to time of transplanting, spacing and age of seedlings. *Ind. J. Agron.* **44**: 344-46.
- Sharma, A., Dhaliwal, L. K., Sandhu, S. K. and Singh, S. 2011.** Effect of plant spacing and transplanting time on phenology, tiller production and yield of rice (*Oryza sativa* L.) *Inter. J. Agri. Sci.* **7(2)**: 249-53.
- Singh, R., Kumar, A., Kumar, S. and Chand, R. 2008.** Alternative crop establishment tillage technologies in rice. *Indian Res. J. Ext. Edu.* **8(1)**: 13-15.
- Singh, Devinder. 2003.** *Evaluation of different planting techniques for yield optimization and water saving in paddy (Oryza sativa. L.)*. M. Sc. Thesis, Punjab Agricultural University, Ludhiana.
- Singh, S., Yadav, A., Malik, R. K. and Singh, H. 2002.** Rice transplanting on raised beds - A new. technique in rice-wheat sequence. Proceeding of international workshop on herbicide resistance management and zero tillage in rice-wheat cropping system, held at CCS Haryana Agricultural University, Hissar March 4-6, 2002.
- Sujathamma, P., Reddy, K. D. and Rani, G. U. 2015.** Yield gap analysis of rice for technological interventions. *The Ecoscan.* **9(1&2)**: 235-237.
- Singh, K. L., Devi N. K., Athokpam, H. S., Singh, B. N., Sagolshem, K. S., Meetel, W. H. and Mangang, A. 2015.** Effect of cultivars and planting geometry on weed infestation, growth and yield in transplanted rice. *The Ecoscan.* **9(1&2)**: 285-288.
- Soomro, H., Soomro, A., Oad, F. C., Ansari, A. H. and Oad, L. 2001.** Effect of transplanting dates on yield and its related traits in Rice (*Oryza sativa* L.). *J. Biol. Sci.* **1(5)**: 363-64.
- Sandhu, S. S., Mahal, S. S., Vashist, K. K., Buttar, G. S., Brar, A. S. and Singh, M. 2012.** Crop and water productivity of bed transplanted rice as influenced by various levels of nitrogen and irrigation in northwest India. *Agricultural Water Management.* **104**: 32-39.
- Thawait, D., Patel, A. K., Kar, S., Sharma, M. K. and Meshram, M. R. 2014.** Performance of transplanted scented rice (*Oryza sativa* L.) under SRI based cultivation practices: a sustainable method for crop production. *The Bioscan.* **9(2)**: 539-42.

